

The ASCII Keyboard

The ASCII keyboard on the ID-EDIT looks like your usual computer keyboard. As its main task is usability in a studio environment and not typing letters, its keys have been optimized and differ in shape from an ordinary keyboard. The integrated ASCII-keyboard is organized and divided into two areas: the keys of the Matrix 1-48 resp.49-96 are being used by NUENDO in the "GO TO MARK" mode, for CHAN SELECT, READY, CUT, LISTEN/SOLO or MIXER PRESET.

The remaining keys like "SHIFT", "CNTRL", "UP/DOWN" etc. always keep their ASCII keyboard functionality. Among other things this allows the simultaneous selection of several tracks.

The keys USER-F1 to USER-F10 are ASCII function keys and always work as ASCII keyboard keys.. In combination with "SHIFT", "CNTRL" etc. up to 80 instead of previously 10 random entry function keys are available.

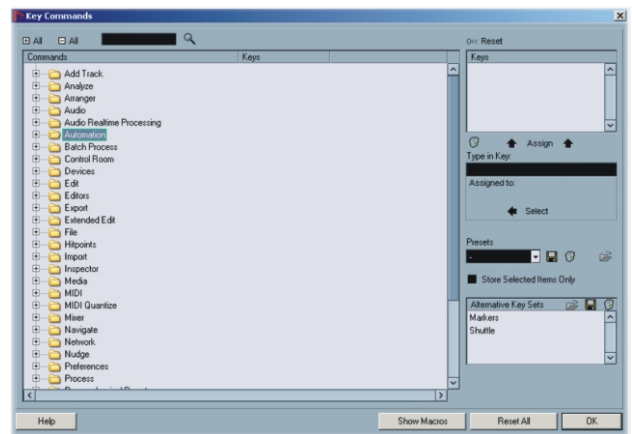
Note:

You can freely assign any NUENDO function to the ASCII function keys F1 - F10.

Assigning ASCII function keys F1 - F10

Proceed as follows to assign the desired functions to the ASCII function keys F1 - F10:

1. Select "Device Setup..." on NUENDO's Devices menu.
2. In the Device Setup dialog, select the ID. If it's not available, click the Add Device button and select the ID from the pop-up Menu.
3. Click in the Category and Command columns for the desired User Function button and select the functions you wish to Assign from the pop-up menus.



ASCII Mode

The ASCII mode is the default mode of the keyboard.

In this mode, the keyboard works like any other computer keyboard.

Same as on a usual ASCII keyboard and differing from the other buttons on the ID-EDIT the keyboard keys will repeat their signal for as long as you press them.

This is called Bounce Repeat.

If you use a Windows computer, bounce (repeat) time can be set under Control Panels/Keyboard Properties.

When you scrub-play, you should thus use the keyboard keys instead of the User function buttons as the latter do not provide bounce repeat.

Note:

The ID-EDIT keyboard always uses an English/US keyboard layout, even when you have selected another layout for the connected computer. If you have, some key commands may not work properly. We therefore recommend that you use the English/US keyboard layout on your computer.

The Matrix

If the ASCII mode is not active, the keys on the ASCII keyboard become a matrix of On/Off switches for the last selected function type.

The LEDs above each key represent the On/Off status of the current function for each of the channels. The individual keys on the keyboard represent the channels 1-48 or 49-96.

You get complete overview and can therefore quickly activate or deactivate the same function type e.g. CUT for many channels.

The shape of the keyboard keys helps you to increase setting speed. You can simply run your finger over the keys of several adjacent channels in one go.

