

Operating Manual



idedit

 NUENDO₄

WK III AUDIO

Welcome

Thank you for choosing the WK-AUDIO ID-EDIT!

ID-EDIT is a hardware controller from WK-AUDIO, designed for Steinberg's Media Production System NUENDO 4. EDIT is the ideal solution for NUENDO users who require a compact, professional control surface focused on edit work and multi-track recording, rather than a complete mixing desk.

Derived from the popular ID-Controller, EDIT shares an almost identical layout and construction with its larger brother but differs in that the individual function areas are optimized for editing and working with tracks.

As also found on the ID, the integrated ASCII keyboard is divided into two areas. The keys are loaded with LED indicators and track numbers to directly select channels or tracks numbered 1-48 or 49-96 for important functions such as CUT, SOLO or RECORD; this also allows the simultaneous selection of several tracks.

The remaining keys like "SHIFT", "CNTRL", "UP/DOWN" etc. always keep their ASCII keyboard functionality. The keys "USER-F1" to "USER-F10" are ASCII function keys. In combination with "SHIFT", "CNTRL" etc. up to 80 ASCII key commands are available.

Not only can frequently used NUENDO functions be accessed directly via the edit command buttons, but there are also freely assignable keys which are ideal for use together with user definable NUENDO key commands.

The weighted 60mm dial can be used for Jog, Shuttle and Scrub, as well as for diverse editing functions such as working with Trims, Fades and Zooms. In addition, extra keys to position and to zoom in events in the NUENDO project window are conveniently positioned directly around the dial.

The integration of the Control Room section is also exemplary, with reduction keys for Mono/Stereo, Front/Rear, LFE and L-R, meaning that the corresponding features in the NUENDO master section are addressed directly.

Based on our more than 30 years experience (we started 1978 with custom made analogue mixing desks for studio, theatre and live performance), we also create custom made solutions: please feel free to inform us about your needs.

We are sure that, once you have quickly mastered its handling, it will greatly enhance your workflow, helping you to reduce cost and gain flexibility.
We are sure you will have fun using the WK-AUDIO ID-EDIT!

Your WK-AUDIO Team

This hardware is developed and manufactured by



This hardware is developed and manufactured by

WK-AUDIO
Osnabrücker Str.1
D - 49328 MELLE-BUER

Phone: +49 5427-1691
FAX: +49 5427-6416

Internet: www.wk-audio.de
Email: info@wk-audio.de

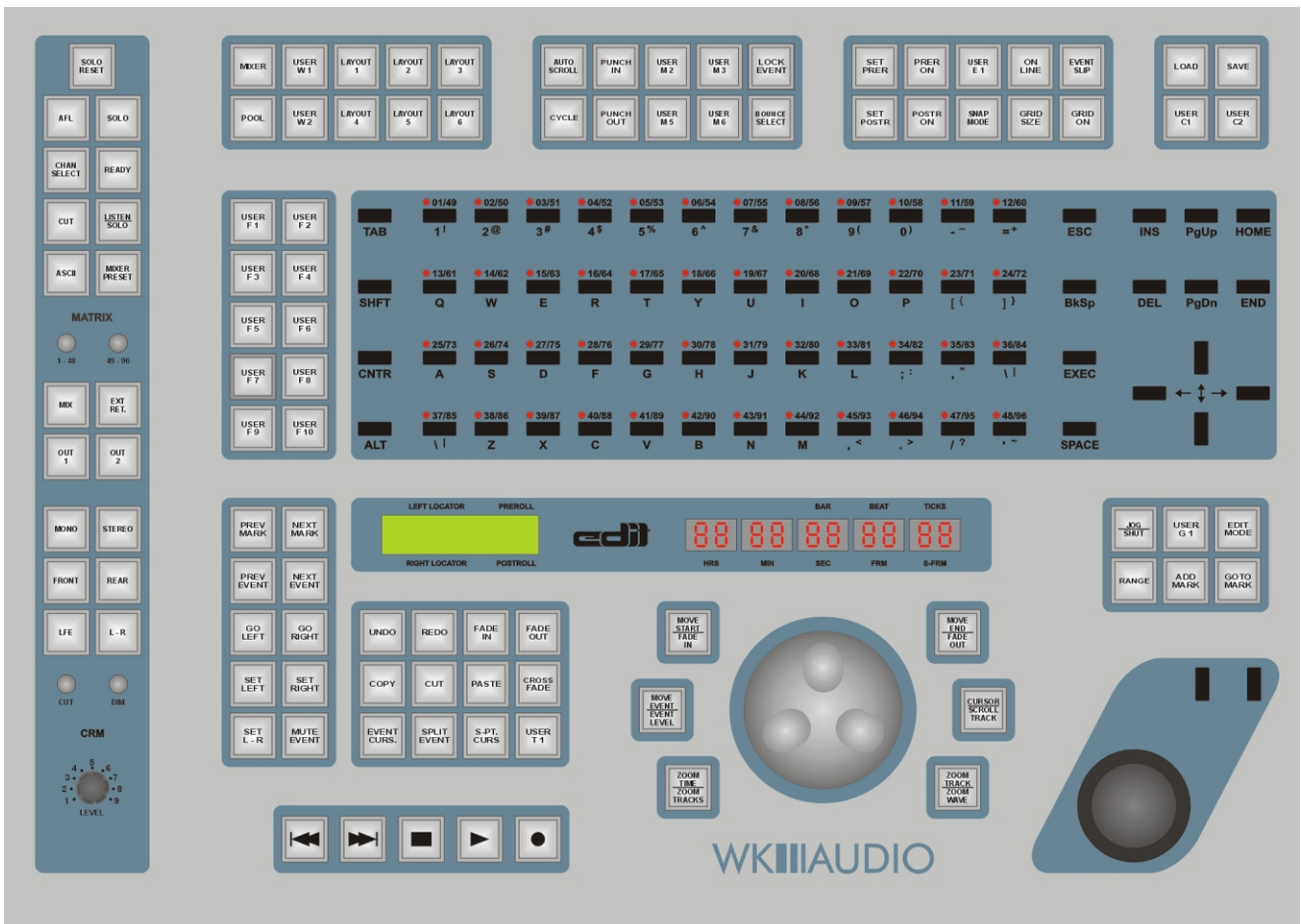
WK-AUDIO ID Operation Manual

The information in this document is subject to change without notice and does not represent a commitment on the part of WK-AUDIO and/or Steinberg Media Technologies GmbH.

No part of this publication may be copied, reproduced or otherwise transmitted or recorded, for any purpose, without prior written permission by WK-AUDIO and/or Steinberg Media Technologies GmbH.

All product and company names are ™ or ® trademarks of their respective owners.

© WK-AUDIO 2008
All rights reserved.



Please also read the NUENDO 4 manual. It's important to understand the complete system, and will inform you about a lot of details and practical tips; we are sure you will love your ID.



Packing List

WK-AUDIO ID-EDIT:

- USB standard cable, 1,8m or longer
- Installer CD-ROM, contents:
- Driver installation software
- WK-AUDIO ID-EDIT Operation manual

Minimum System Requirements

The minimum system requirements state the minimal specification your computer must have to be able to use the software. A more powerful system may be required for certain tasks or larger projects.

To be able to use your WK-AUDIO ID-EDIT with a PC computer, you will need the following:

- Windows Vista, Windows XP Home and Professional with SP 2
- Intel / AMD Prozessor 2 GHz minimum
- 1 GB RAM
- DVD drive required for installation
- Windows DirectX compatible audio hardware; ASIO compatible audio hardware recommended for low latency performance
- 1 USB port required for Steinberg Key (copy protection device)
- Internet connection required for license activation
- 1-4 USB ports for the controller (depends on additional fader packs)
- NUENDO 4.xx
- WK-AUDIO ID driver software.

To be able to use your WK-AUDIO ID-EDIT with a MAC computer, you will need the following:

- Mac OS X v10.4
- Power Mac G4 1 GHz or Core Solo 1.5 GHz
- 1 GB RAM
- DVD drive required for installation
- Core Audio compatible audio hardware is required
- 1 USB port required for Steinberg Key (copy protection device)
- Internet connection required for license activation
- 1-4 USB ports for the controller (depends on additional fader packs)
- NUENDO 4.xx
- WK-AUDIO ID driver software.

Safety Warning

Note: Mains electricity is dangerous and can kill! Within the WK-AUDIO ID, mains voltage is present. Do not remove any WK-AUDIO ID cover with mains connected! Check your mains wiring and earthing before you switch on the WK-Audio ID! The WK-AUDIO ID chassis is always connected to mains earth to ensure your safety.

Do not remove the mains earth connection!

Safety Precautions

- Make sure that the 230/115V switch on the ID-EDIT rear panel is set correctly before you attach the power cable to an AC outlet!
- Be sure that the ID-EDIT mains connection cable is only routed in a way that nobody can walk on or trip over it, thereby accidentally cutting mains supply.
- If you use a mains extension cable, make sure that the overall power consumption of all connected devices does not exceed its maximum capacity.
- Before cleaning the WK-AUDIO ID-EDIT, disconnect the mains connection. Do not use chemicals, solvents and abrasives for cleaning. Use a lint-free cloth and a soft brush.
- Prevent damage by avoiding exposure to fluids, dirt, dust, heat and smoke.
- Prevent external objects from falling onto, and liquids from spilling into the appliance. Objects could fall on parts that carry voltage (live parts) or cause a short circuit, which could lead to fire or electric shock. Liquids could lead to electric shock and damage the appliance.
- Do not open the appliance as this will expose parts that carry voltage. Do not attempt to service the appliance beyond what's described in the operation manual. All other servicing should be referred to qualified service personnel.
- The appliance should never be used near water or in very humid locations.
- The appliance should only be used with a stand that is recommended by the supplier.
- The appliance should not be exposed to room temperatures of less than 5°Celsius (41° Fahrenheit) or more than 40° Celsius (104° Fahrenheit). Avoid large variations in temperature and humidity to prevent condensation which may short circuit the appliance. All electromechanical parts must be used in a proper fashion to ensure long-term trouble-free operation.

Getting Started

This chapter contains a description of the ID driver software installation process as well as a description of the necessary settings that you must make in NUENDO.

Connecting the ID-EDIT

Connecting the ID-EDIT is a simple and straightforward process. Do this:

1. Use a mains cable to connect the ID-EDIT to a suitable and working mains socket.
2. Switch off your computer.
3. Using the included standard USB cable, connect the USB bus on the ID-EDIT to a USB bus on your computer.
That's all there is to connecting! Next, you must install the driver software.

The ID Driver Software

The ID driver software that you have received with ID-EDIT must be installed on the computer that you use to run NUENDO.

It is the link that interconnects the NUENDO software and the ID-EDIT hardware. It also allows you to completely remote control the computer from the integrated ASCII keyboard. The driver software is compatible with Windows Xp® (Home and Professional with SP 2), Windows Vista® as well as with Mac OS X v10.4

We recommend that you always use the latest ID software driver version. This is available on the WK-AUDIO web sites. (www.wk-audio.de)

ID Driver Installation

To install the driver software on a PC running Windows, proceed as follows:

1. Make sure the ID-EDIT is properly connected to the USB bus on your computer
2. Switch on the ID-EDIT, then switch on your computer and let it boot up.
The automatic hardware recognition of your computer's operating system will detect the ID-EDIT as a new USB device and ask you for the driver software.
3. Insert the Driver CD into your CD-ROM drive and follow the instructions displayed on your computer screen.
The necessary driver software - a Firmware Loader and the actual driver - will now be installed during two separate installation processes.
4. Restart your computer after installation

To install the driver software on a MAC running OS X, proceed as follows:

1. Make sure the ID-EDIT is properly connected to the USB bus on your computer.
2. Switch on the ID-EDIT, then switch on your computer and let it boot up.
3. Insert the Driver CD into your CD-ROM drive and locate the driver installer.
4. Double-Click the installer file to start the installation process. Follow the instructions displayed on your computer screen.

When the installation is finished, you can start using your ID-EDIT to control NUENDO.

NUENDO Settings

To allow NUENDO to recognize the ID-EDIT and establish communication with it, you must make the following settings in NUENDO:

1. Open the Devices menu and select "Device Setup...". The Device Setup dialog appears.
2. Click the Add Device button (the + button above the Devices list) and select the WK-AUDIO ID from the pop-up menu.
The ID is added to the Devices list on the left side of the dialog.
3. The right side of the dialog now displays settings for the WK-AUDIO ID. Select the MIDI inputs and outputs you want to use from the pop-up menus.
4. If you wish, and if you know what you are doing at this point, you can now assign any NUENDO function to any of the available ID-EDIT User Function buttons. If you are not sure yet, leave that for now, read on and find the information you need.

Note:

To keep things simple, you may first want to use the NUENDO project template file and the NUENDO Preferences file that come on the ID Driver CD-ROM. You can later always create and save your own changed settings.

ID-EDIT Control Types

This section contains basic information about the various types of control available on the ID-EDIT.



Square Function Buttons
most of the square function buttons will light up when you activate a function by pressing its button: it depends on the function. The square function buttons on the ID-EDIT come in two flavours:

Fixed Function buttons

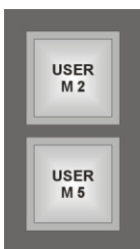
Each of these buttons is used to activate/deactivate one predefined function.

Fixed function buttons are equipped with three modes:

1. If you press the button very briefly, the corresponding function (e.g. Solo) will be activated. Press it again briefly to deactivate the function.
2. Pressing a fixed function button for longer than 250 milliseconds will activate the corresponding function only for as long as you press the button. When you let go of the button, the function will be disabled at once. We call this Push Hold Detection. This is handy in many different editing situations, e.g. when editing with the Jog Wheel and its related fixed function buttons, or when trying what it would be like to mute a channel at a certain point.
3. By an intelligent double configuration of some fixed function buttons WK-AUDIO was able to activate a lot of new commands into the ID-EDIT. With one click you are able to activate the top function (the LED is shining), with a "double click" you are able to activate the bottom function (the LED is flashing).

User Function buttons

Single and groups of User Function buttons have been positioned in various places on the ID-EDIT user interface. You can freely assign any Nuendo function to any of these buttons.



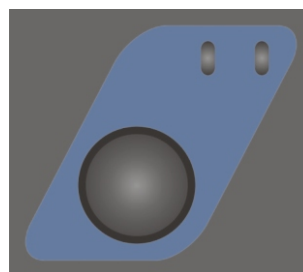
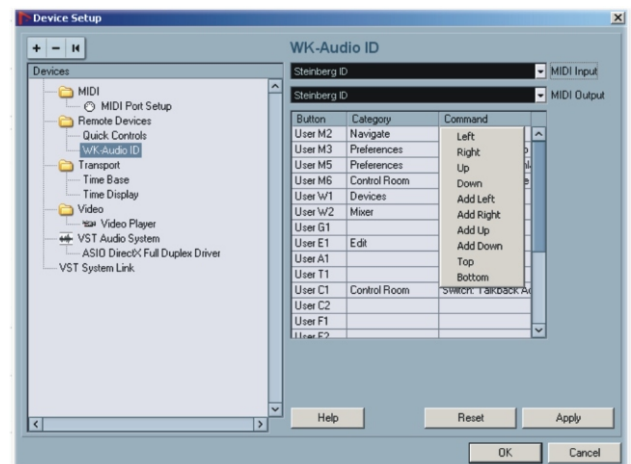
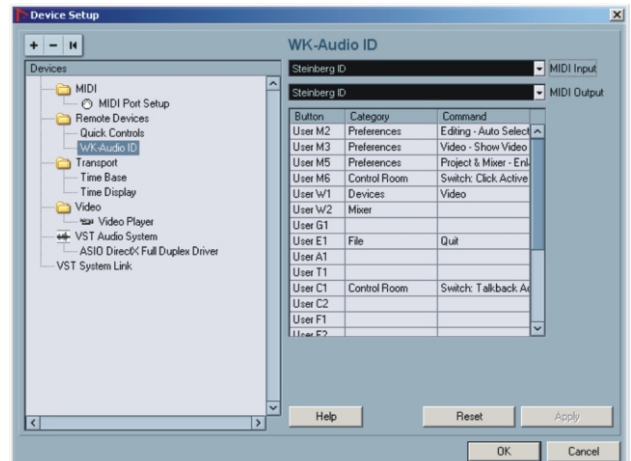
Note: Once you have assigned NUENDO functions to these buttons, you can create your own name tags for them. Simply print them on transparent overhead foil using a laser printer.

User function buttons do not provide Push Hold Detection or Bounce Repeat, as this may lead to confusing results.

Assigning User Functions

Proceed as follows to assign the desired functions to the ID-EDIT User function buttons:

1. Select "Device Setup..." on NUENDO's Devices menu.
2. In the Device Setup dialog, select the ID. If it's not available, click the Add Device button and select the ID from the pop-up menu.
3. Click in the Category and Command columns for the desired User Function button and select the functions you wish to Assign from the pop-up menus.



Trackball

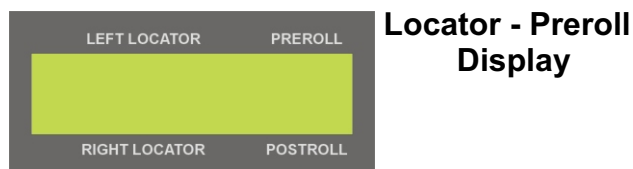
The Trackball is a high quality (Ip65) convenient mouse replacement. Roll the ball to move the cursor on the screen and use the buttons as left and right mouse buttons.

Potentiometers

Control Room Level is a rotary dial that has a start and an end point.

To increase a level, turn the potentiometer clockwise, to decrease it, turn anticlockwise.

The Transport Section



Locator - Preroll Display

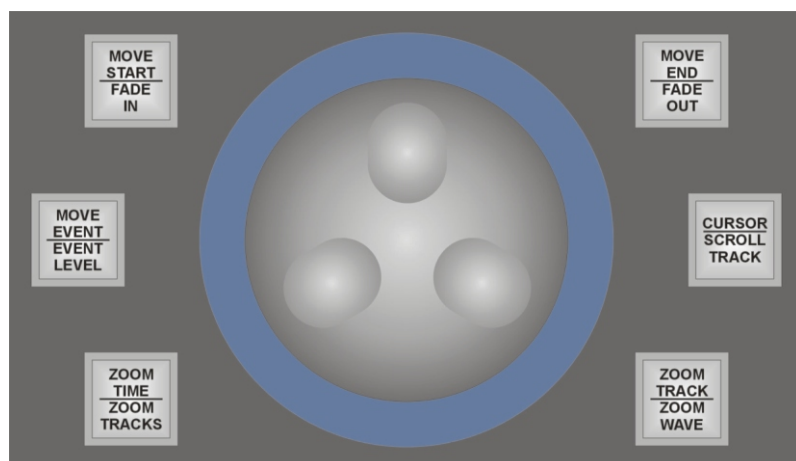
This backlit display shows the current Left and Right Locator settings as well as the currently set Pre/Post roll times.

You can make these settings using the corresponding Function buttons.



Timecode Display

This display shows the current Nuendo Project Cursor position in hours/minutes/seconds/frames/sub-frames or ticks/samples, depending on what you currently do in Nuendo.



The Jog Wheel

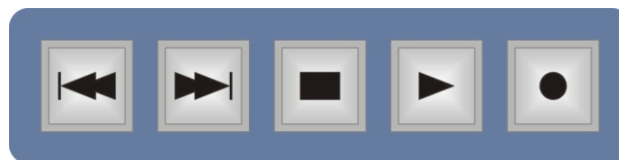
The Jog wheel on the ID_EDIT is heavy-weighted and high-resolution (4000 values per turn of the wheel).

It has two basic functions:

You can use it to position the Project Cursor in NUENDO. The step width is automatically set to the step width set for the edited NUENDO function (e.g. bars/beats, timecode, samples..). You can use the Jog wheel to select and edit Events in NUENDOs.

Note:

For this to work, the "Auto-select Events under Cursor" function on the Editing page of NUENDO's Preferences dialog must be active and at least one NUENDO Track must be selected, as Auto-select always points to the selected Track(s).



The Transport Control

The ID Transport controls are the twins of NUENDO's transport controls: Rewind (to project start), Fast Forward (to project end), Stop, Start and Record. To record-enable a track, use the Ready buttons in the Fader section.

Setting the Jog Wheel operating mode

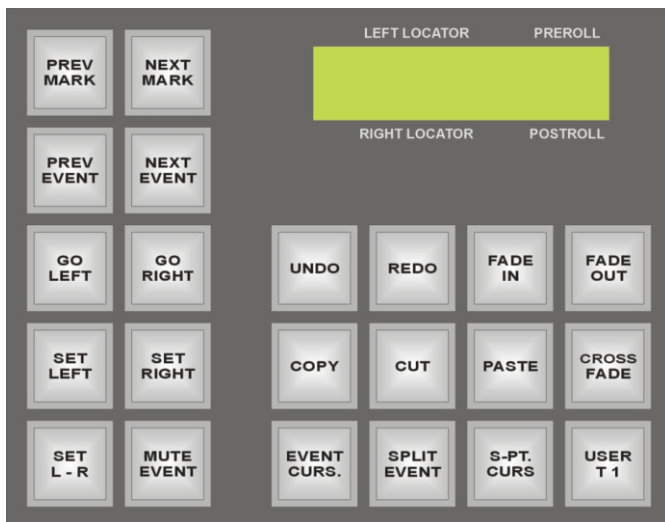


The Jog Wheel operating mode is set with the JOG and SHUT buttons (above the Trackball).

- Press JOG to switch the Jog mode. In this mode, the Jog Wheel sets the Jog Wheel control on the transport panel in Nuendo.
- Press SHUT to switch the Shut mode. The Jog Wheel now sets the shuttle speed Control on the transport panel in NUENDO.

Jog Wheel Function buttons

Six double function buttons (=12 functions!) are grouped around the Jog Wheel. These are used to activate or deactivate the Jog Wheel positioning and editing modes.



PREV MARK

Press this button to let the Project Curser jump to the previous Marker.

NEXT MARK

Press this button to let the Project Cursor jump to the next Marker.

PREV EVENT

Pressing this lets you select the previous Event on the selected Track.

NEXT EVENT

Pressing this lets you select the next Event on the selected Event.

GO LEFT

Press this to move the Project Cursor to the position of the left Locator.

GO RIGHT

Press this to move the Project Cursor to the position of the right Locator.

SET LEFT

If you activate this Function button, you can set the left Locator position to the current Project Cursor position.

SET RIGHT

You can set the right Locator position to the current Project Cursor position.

SET L-R

If you press this Function button, the Locators are set to the start and end position of the Event.

MUTE EVENT

Mutes the currently selected Event.

UNDO

Activ. NUENDO`s Undo function.

REDO

Activ. NUENDO`s Redo function.

FADE IN

Press this to create a Fade in for one or several currently selected Events. The Fade in starts at the Event start and ends at the current Project Cursor position.

FADE OUT

Press this to create a Fade out for one or several Events. The Fade out starts at the current Project Cursor position and ends at the Event end.

COPY

Activ. NUENDO`s Copy function.

CUT

Activ. NUENDO`s Cut function.

PASTE

Activ. NUENDO`s Paste function

CROSS FADE

Creates a Crossfade between the selected Event(s) and its/their neighbour Event(s). If the Events overlap, the Crossfade gets the same length as the overlap. If you process Events adjacent to another and they possess enough "hidden" audio, the crossfade will get the Default fade length set in the Crossfade Editor. If they don't, no crossfade is created.

EVENT CURS

Pressing this positions the start of if available the Snap point of the selected Event at the current Project Cursor position.

SPLIT EVENT

Pressing this will split the Event at the current Project Cursor position.

S-PT. CURS

S-PT CURS stands for "Snap point to Cursor" and that's what you do here: Pressing this button will create a Snap point at the current Project Cursor position. This function is applied to the currently selected Event(s).

USER T 1

USER T 1 is one of some user-definable Function buttons. Please also read "Assigning User Functions".

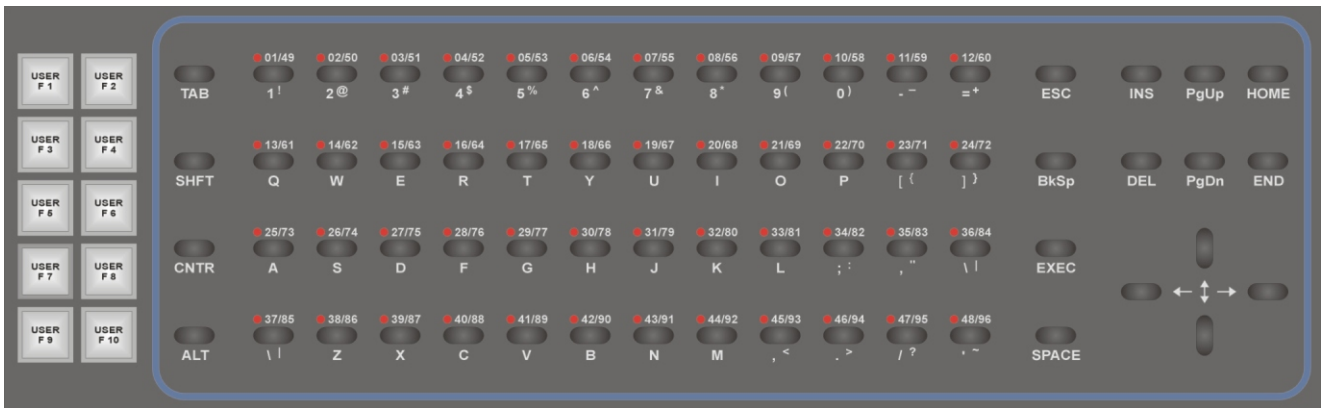
MOVE START	This button is called NUDGE EVENT START. When it is active, you can use the Jog Wheel to change the playback start within Events and thus resize them. The step width of this function depends on the grid settings in NUENDO. You can set it by pressing the GRID SIZE button, located in the third button group above the ASCII keyboard.
FADE IN	It's to change the Fade In time of an Event.
MOVE EVENT	If you activate this function, you can use the Jog Wheel to move the current time position of the selected Event(s). Here too, the GRID SIZE setting defines the step width.
EVENT LEVELZ	It's to change the Level of an Event.
OOM TIME	With this function you can turn the Jog Wheel clockwise to horizontally magnify Tracks/-Events. Turn the wheel anticlockwise to zoom out again.
ZOOM TRACKS	With this function you can zoom Tracks to see more details.
MOVE END	This button is called NUDGE EVENT END. When it is active, you can use the Jog Wheel to resize the end of an Event. The step width of this function depends on the grid settings in NUENDO. Use the GRID SIZE button to change it according to your wishes.
FADE OUT	It's to change the Fade Out time of an Event.
CURSOR	This is the default setting, the Jog Wheel controls the NUENDO position cursor.
SCROLL TRACK	Use this function to scroll a selected Track. Pressing SHIFT (ASCII keyboard) at the same time, you can select groups of Tracks.

ZOOM TRACK	It's to enlarge a selected Track.
ZOOM WAVE	It's to enlarge the view of a Track, just to see more details. In this mode you do`nt change the Level.



6 Function buttons above the Trackball

JOG	Press JOG to switch the Jog mode. In this mode, the Jog Wheel sets the Jog Wheel control on the transport panel in NUENDO.
SHUT	Press SHUT to switch the Shut mode. The Jog Wheel now sets the shuttle speed control on the transport panel in NUENDO.
USER G 1	USER G 1 is one of some user-definable Function buttons. Please also read "Assigning User Functions".
ADD MARK	Press this to add a new Marker at the current Project Cursor position.
EDIT MODE	Press this button to activate or deactivate Edit mode in NUENDO. This is useful if you work with audio and video in conjunction.
GO TO MARK	Pressing this button activates or deactivates the Goto Mark mode of the ASCII keyboard. You can then use its keys to directly jump to 96 Markers.



The ASCII Keyboard

The ASCII keyboard on the ID-EDIT looks like your usual computer keyboard. As its main task is usability in a studio environment and not typing letters, its keys have been optimized and differ in shape from an ordinary keyboard. The integrated ASCII-keyboard is organized and divided into two areas: the keys of the Matrix 1-48 resp.49-96 are being used by NUENDO in the "GO TO MARK" mode, for CHAN SELECT, READY, CUT, LISTEN/SOLO or MIXER PRESET.

The remaining keys like "SHIFT", "CNTRL", "UP/DOWN" etc. always keep their ASCII keyboard functionality. Among other things this allows the simultaneous selection of several tracks.

The keys USER-F1 to USER-F10 are ASCII function keys and always work as ASCII keyboard keys.. In combination with "SHIFT", "CNTRL" etc. up to 80 instead of previously 10 random entry function keys are available.

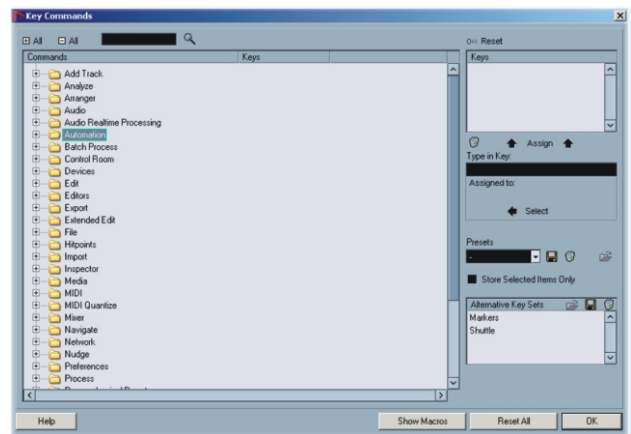
Note:

You can freely assign any NUENDO function to the ASCII function keys F1 - F10.

Assigning ASCII function keys F1 - F10

Proceed as follows to assign the desired functions to the ASCII function keys F1 - F10:

1. Select "Device Setup..." on NUENDO's Devices menu.
2. In the Device Setup dialog, select the ID. If it's not available, click the Add Device button and select the ID from the pop-up Menu.
3. Click in the Category and Command columns for the desired User Function button and select the functions you wish to Assign from the pop-up menus.



ASCII Mode

The ASCII mode is the default mode of the keyboard.

In this mode, the keyboard works like any other computer keyboard.

Same as on a usual ASCII keyboard and differing from the other buttons on the ID-EDIT the keyboard keys will repeat their signal for as long as you press them.

This is called Bounce Repeat.

If you use a Windows computer, bounce (repeat) time can be set under Control Panels/Keyboard Properties.

When you scrub-play, you should thus use the keyboard keys instead of the User function buttons as the latter do not provide bounce repeat.

Note:

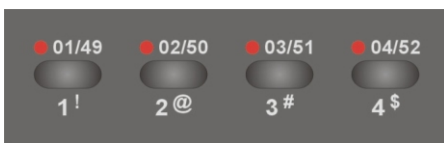
The ID-EDIT keyboard always uses an English/US keyboard layout, even when you have selected another layout for the connected computer. If you have, some key commands may not work properly. We therefore recommend that you use the English/US keyboard layout on your computer.

The Matrix

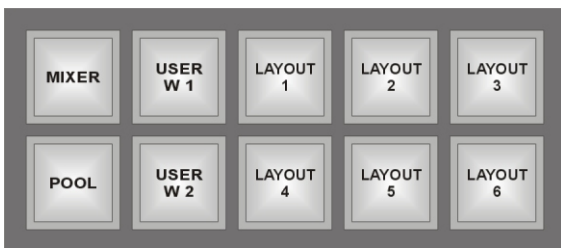
If the ASCII mode is not active, the keys on the ASCII keyboard become a matrix of On/Off switches for the last selected function type. The LEDs above each key represent the On/Off status of the current function for each of the channels. The individual keys on the keyboard represent the channels 1-48 or 49-96.

You get complete overview and can therefore quickly activate or deactivate the same function type e.g. CUT for many channels.

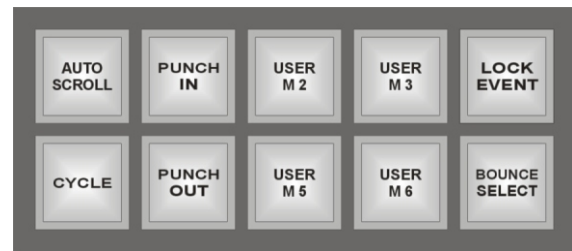
The shape of the keyboard keys helps you to increase setting speed. You can simply run your finger over the keys of several adjacent channels in one go.



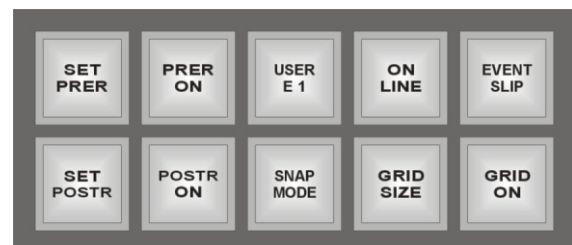
34 Key Commands on top of the unit



MIXER	Let`s you open or close NUENDO`s Mixer window. If NUENDO is not running,you can press this button to boot it.
POOL	Opens the NUENDO Pool window
USER W 1	It activates one of several user-definable key commands.
USER W 2	It activates one of several user-definable key commands.
LAYOUT 1 - 6	It activates one of 6 different NUENDO workspaces.

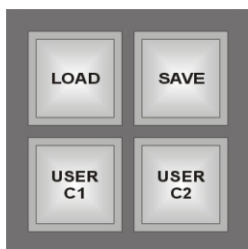


AUTO SCROLL	Let`s you switch NUENDO`s Autoscroll function On or Off
CYCLE	Use this to activate or deactivate the Cycle function.For this to work as expected, the Locators should be set to useful positions.
PUNCH IN	Use this to activate or deactivate automatic Punch in.
PUNCH OUT	Use this to activate or deactivate automatic Punch out.
USER M 2, M 5	USER M 2 /M 5 are two of some user-definable Function buttons.
USER M 3, M 6	USER M 3 /M 6 are two of some user-definable Function buttons.
LOCK EVENT	Locks the current Event. Select which parameters you want locked on the Editing tab of NUENDO`s Preferences dialog.
BOUNCE SELECT	This button does exactly the same as the Bounce Selection function on Nuendo's Audio menu. It lets you create a new audio file based on one or several Events that you have edited.



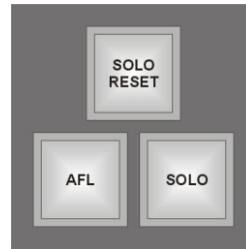
SET PRER	Press this button once or several times to set the desired preroll time. The value type used here (sample rates, seconds, frames, etc.) depends on what's used in the Project.
-----------------	--

SET POSTR ON	Press this button once or several times to set the desired postroll time. The value type used here (sample rates, seconds, frames, etc.) depends on what's used in the Project.
PRER ON	This lets you activate or deactivate preroll.
POSTR ON	This lets you activate or deactivate postroll.
USER E 1	USER E 1 is one of some user-definable Function buttons.
SNAP MODE	Press this several times to step through the available Snap modes.
ON LINE	Press this button to activate or deactivate external synchronization.
GRID SIZE	Press this several times to step through the available Grid size values.
EVENT SLIP	You can move the contents of an event or part without changing its position in the Project window.
GRID ON	Activates or deactivates Snap to Grid.



SAVE	Press the SAVE button to store the current NUENDO project file onto disk.
LOAD	Press the LOAD button to load a NUENDO project from disk.
USER C 1, C 2	USER C 1 and C 2 are two of some user-definable Function buttons. Please also read "Assigning User Functions".

The vertical Function Strip



Solo / Listen Modi

SOLO	This button is used to swap from Listen controlling to Solo controlling.
AFL	In the Listen mode, this button switches between pre fader and post/after fader controlling.
SOLO RESET	Press this to reset all Solo or Listen settings in the Nuendo Mixer except for the Solo Save settings.

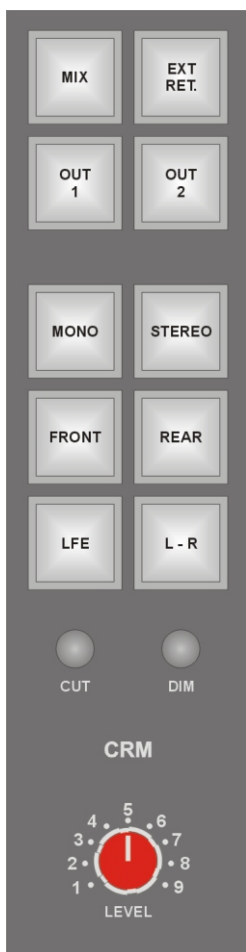


Matrix Select Functions

CHAN SELECT	Press this button to select a Channel/Track. SHIFT or CNTRL allows the simultaneous selection of several tracks.
READY	Press this button to set several Tracks into the READY status.
CUT	Press this button to set several Tracks into the CUT status.
LISTEN SOLO	Press this button to set several Tracks into the LISTEN or SOLO status (this depends on the selected status on top of the strip)..

ASCII	This is the default mode of the keyboard.
MIXER PRESET	Press this button to select one of 8 Mixer Presets.
MATRIX 1 - 48	Press this to have the keys 1 - 48 on your hands.
MATRIX 9 - 96	Press this to have the keys 49 - 96 on your hands.

The Control Room Section



The integration of the Control Room section is also exemplary, with an input and output matrix as well as surround reduction keys, meaning that the corresponding features in the NUENDO master section are addressed directly.

Note:

All ID LEVEL dials in the Monitoring section control the corresponding level controls in NUENDO. However, you first need to set the ID dials to the value currently set in NUENDO to enable level control!

We urgently recommend that you set the power amps that drive your studio monitors to a level so that the maximum NUENDO level cannot damage the speakers!

MIX	Use the MIX button to set the Control Room source to the Mix Bus (this is the default setting).
EXT RET.	Use the EXT. RET button to set the Control Room source to the External Return channel.
OUT 1	Press this key to select your speaker system 1.
OUT 2	Press this key to select your speaker system 2.
MONO STEREO	Pressing the MONO/-STEREO button once will select the first preset with a mono/stereo configuration. When deselecting this button, the first preset in the Preset list will be selected. When there is no preset corresponding to one of these buttons, the respective button will be disabled.
FRONT	Pressing the FRONT button will solo all Front speaker channels.
L - R	Pressing the L-R button will solo the left and right speaker channels.
REAR	Pressing the REAR button will solo the rear speaker channels.
LFE	Pressing the LFE button will solo the LFE speaker channel.
CUT	Use the CUT button to mute the Control Room channel.
DIM	Use the DIM button to enable the Control Room Dim function (which reduces the set level by a value set in the NUENDO Preferences).
LEVEL	The LEVEL dial is used to control the overall level of the Control Room channel.

Technical Specifications

Dimensions

Width: 512 mm

Depth: 441 mm

Connections

1 USB 1.1, 1 power chord

Specifications

1 potentiometer in the Control Room section.

174 Keys, most backlit, most framed, up to

10.000.000 key cycles

1 LCD Display 2 lines of 16 characters

10x 7-segment LED displays

Heavy-weighted, high-resolution Jog Wheel;

4000 steps per revolution.

ASCII keyboard (English layout)

Industry standard trackball according to IP65,
protected against dust and water, 38 mm

2 Processor boards

Steel housing (no interspersions)

Padded arm rests

Non-reflecting surface

Hardware: Made in Germany

Power supply: integrated 60 Watts with 65%
overhead.

Overview

Welcome	P 01
This hardware is developed and manufactured by	P 02
WK-AUDIO ID-EDIT Operation Manual	P 02
Packing List	P 03
Minimum System Requirements	P 03
Safety Warning	P 03
Safety Precautions	P 03
Getting Started	P 04
ID-EDIT Control Types	P 05
The Transport Section	P 06 - P 08
The ASCII Keyboard	P 09 - P 10
34 Key Commands	P 10 - P 11
The Vertical Functions Strip	P 11 - P 12
The Control Room Section	P 12
Technical Specifications	P 13